

Südfrankreich die Zweite

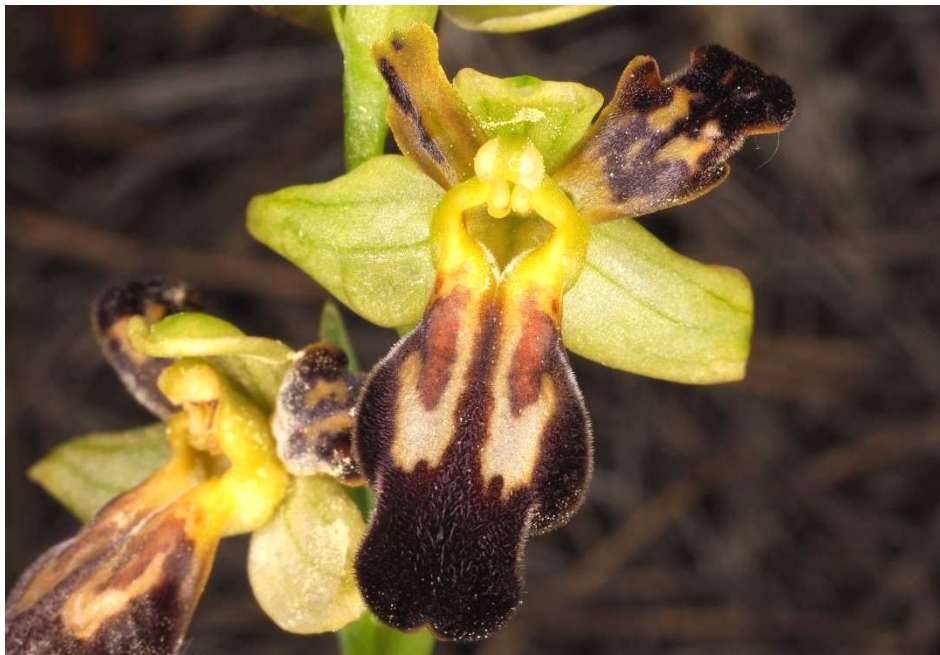
Zu den Spätblühern an die Côte d'Azur

17. bis 23. April 2015

BILDTAFELN Teil 2



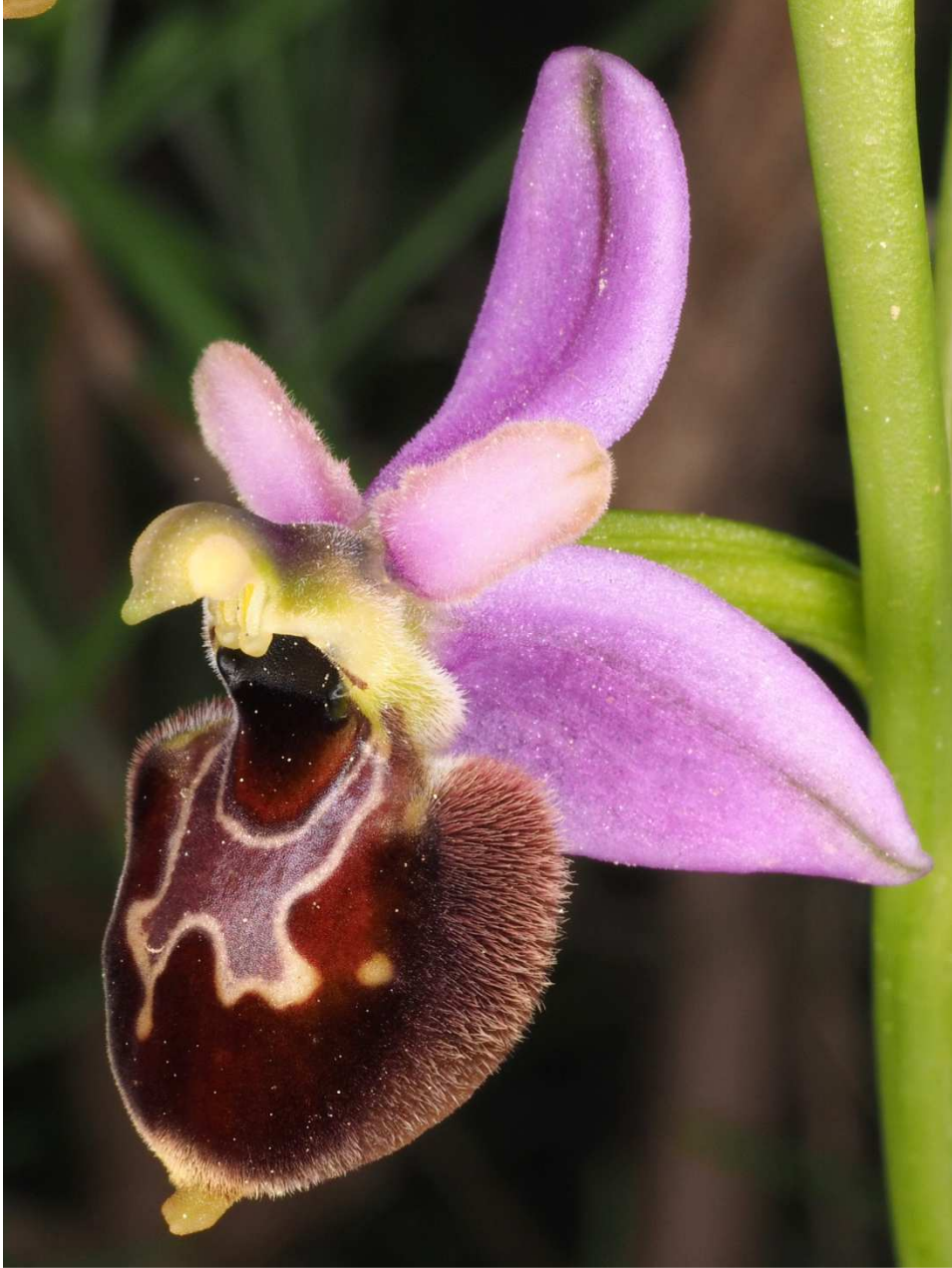
Ophrys sphegodes subsp. provincialis (oben links), Ophrys arachnitiformis subsp. splendida (unten rechts) und Hybriden



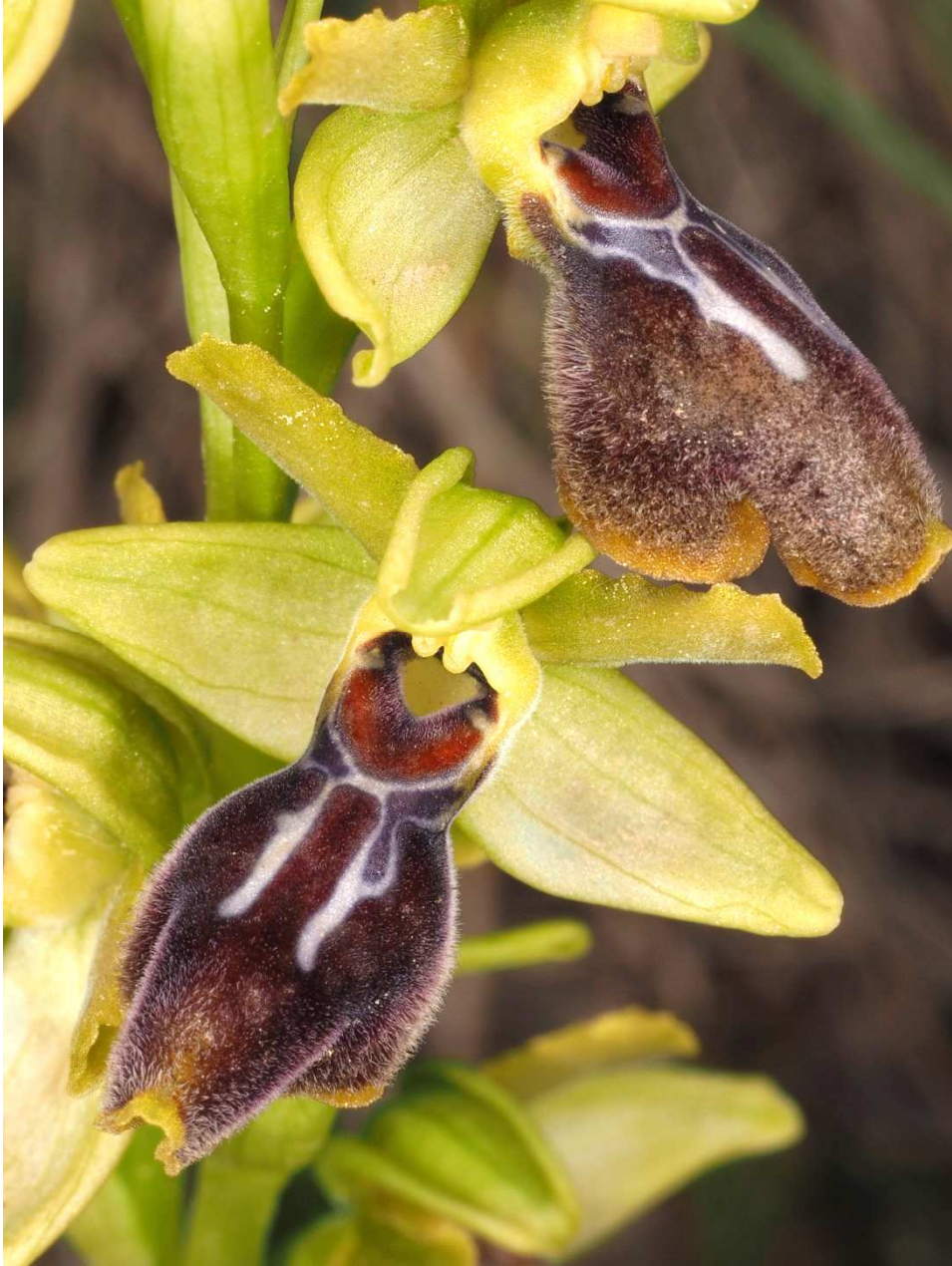
Ophrys fusca subsp *fusca* "forestieri"



Ophrys holoserica subsp. *pseudoscolopax* (oben links),
Ophrys arachnitiformis subsp. *splendida* (unten rechts) und Hybriden



Ophrys holoserica subsp. *pseudoscolopax*
x *Ophrys arachnitiformis* subsp. *splendida*



Ophrys lutea subsp. *lutea* x *Ophrys passionis* subsp. *passionis*



Serapias neglecta subsp. *neglecta*



Serapias neglecta subsp. *neglecta*



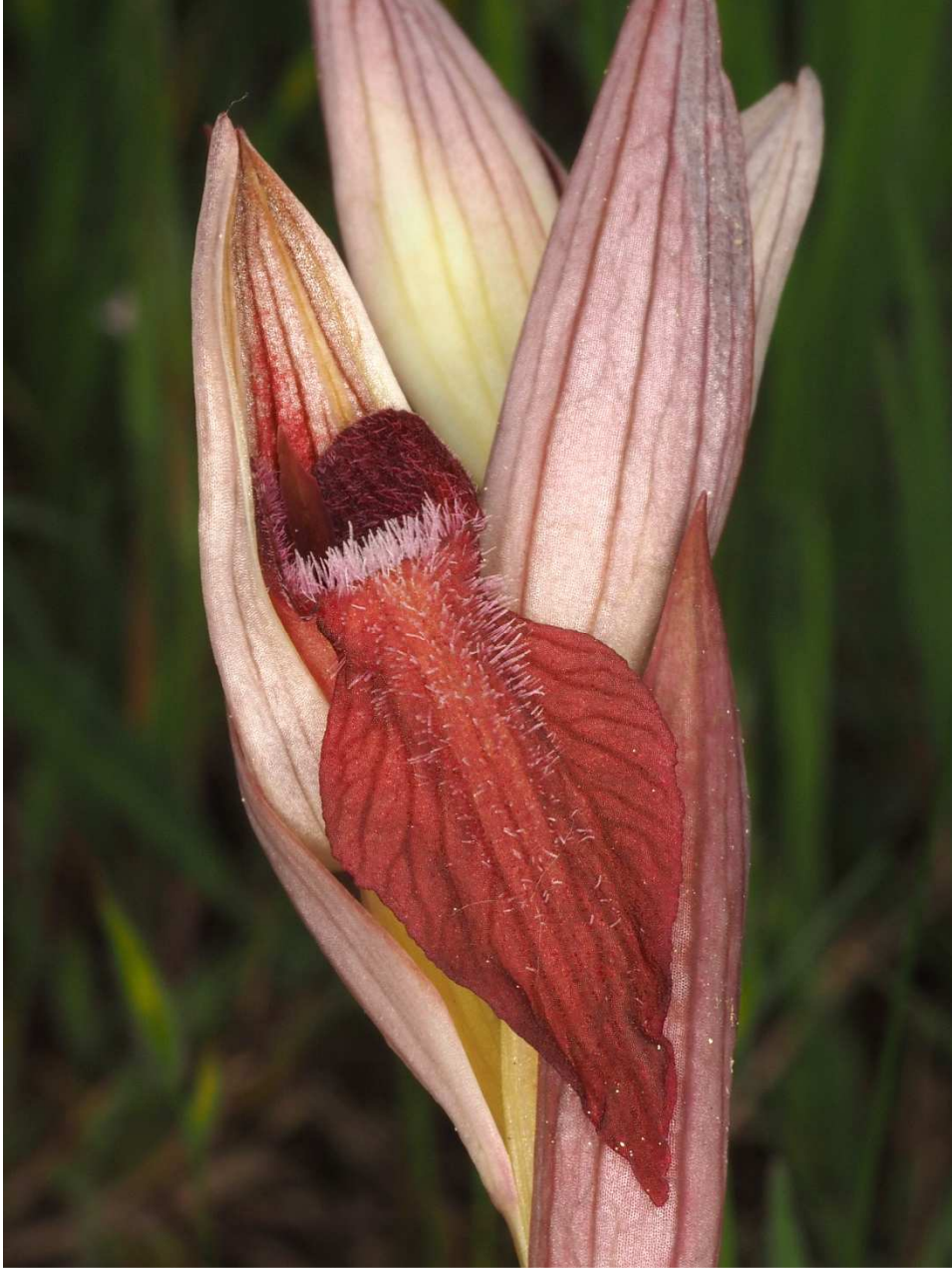
Serapias cordigera subsp. *cordigera*



Serapias olbia



Serapias lingua subsp. *lingua*



Serapias vomeracea subsp. *vomeracea* x *Serapias cordigera* subsp. *cordigera*



Serapias olbia x *Serapias neglecta* subsp. *neglecta* ?



Ophrys arachnitiformis subsp. *splendida*
x *Ophrys bertolonii* subsp. *benacensis* "aurelia"



Ophrys scolopax subsp. *scolopax*
 x *Ophrys bertolonii*
 subsp. *benacensis* "aurelia"



Ophrys passionis subsp. *passionis*
 x *Ophrys holoserica*
 subsp. *pseudoscolopax*



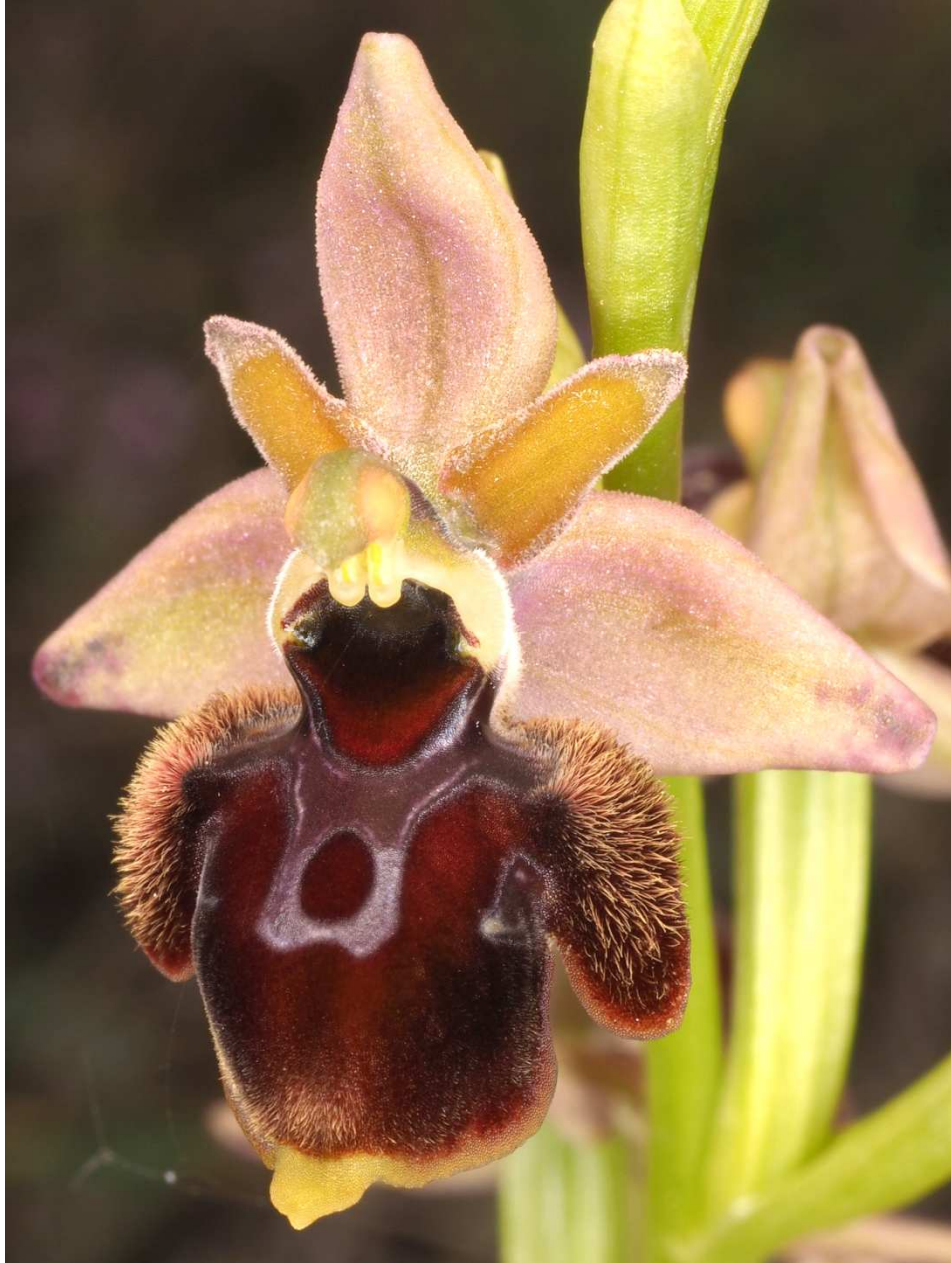
Ophrys scolopax subsp. *scolopax*
 x *Ophrys holoserica*
 subsp. *pseudoscolopax*



Ophrys holoserica
 subsp. *pseudoscolopax*
 x *Ophrys bertolonii*
 subsp. *benacensis* "aurelia"



Ophrys holoserica subsp. *pseudoscolopax*
x *Ophrys bertolonii* subsp. *benacensis* "aurelia"



Ophrys passionis subsp. *passionis* x *Ophrys holoserica* subsp. *pseudoscolopax*



Ophrys scolopax subsp. *scolopax*
x *Ophrys bertolonii* subsp. *benacensis* "aurelia"?



Ophrys sphegodes subsp. *provincialis*
x *Ophrys holoserica* subsp. *pseudoscolopax*?



Ophrys sphegodes subsp. *provincialis* (oben links),
Ophrys incubacea subsp. *incubacea* (unten rechts) und Hybriden



Ophrys sphegodes subsp. *provincialis* x *Ophrys incubacea* subsp. *incubacea*



Ophrys arachnitiformis subsp. *splendida*



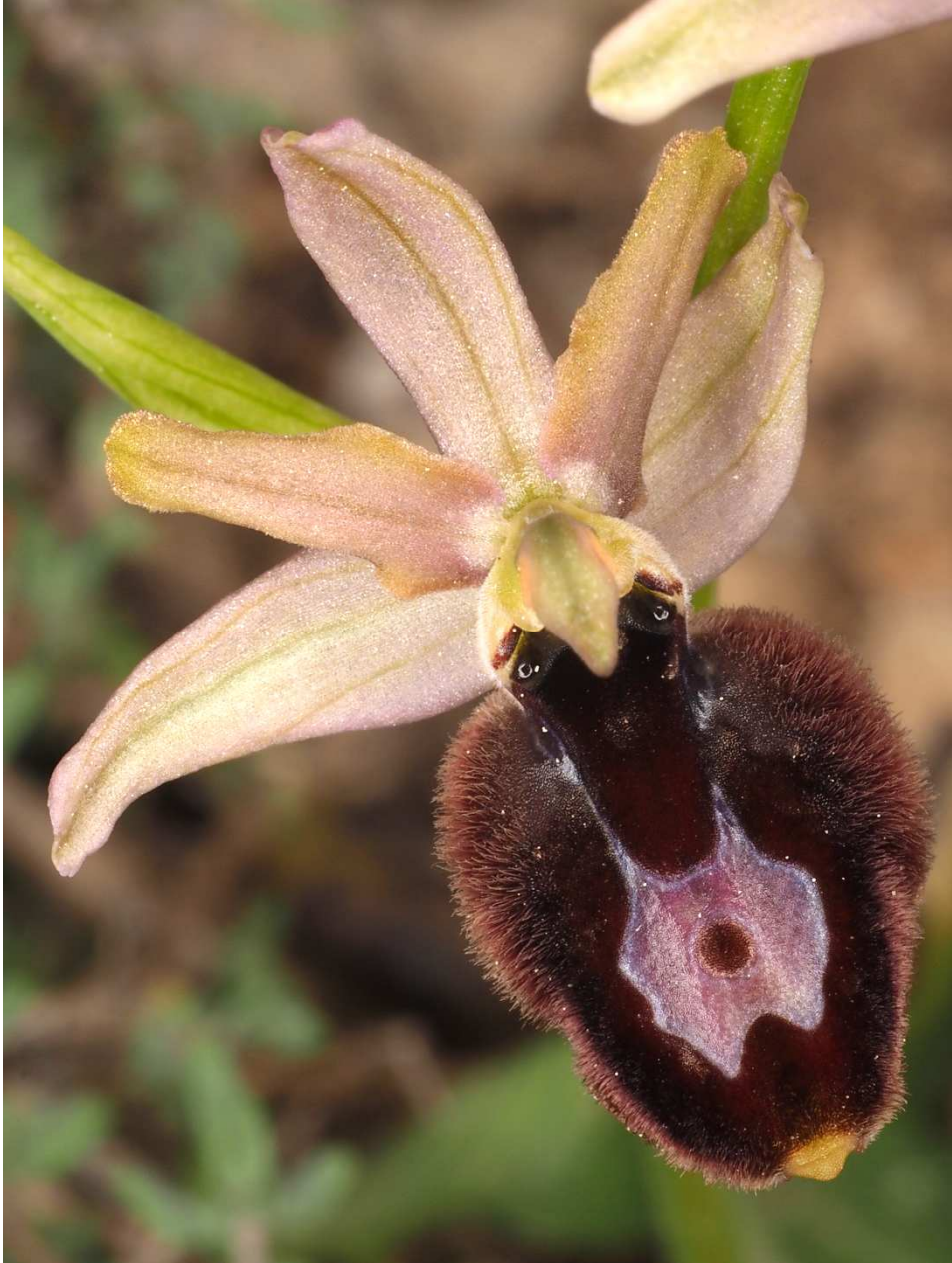
Limodorum abortivum



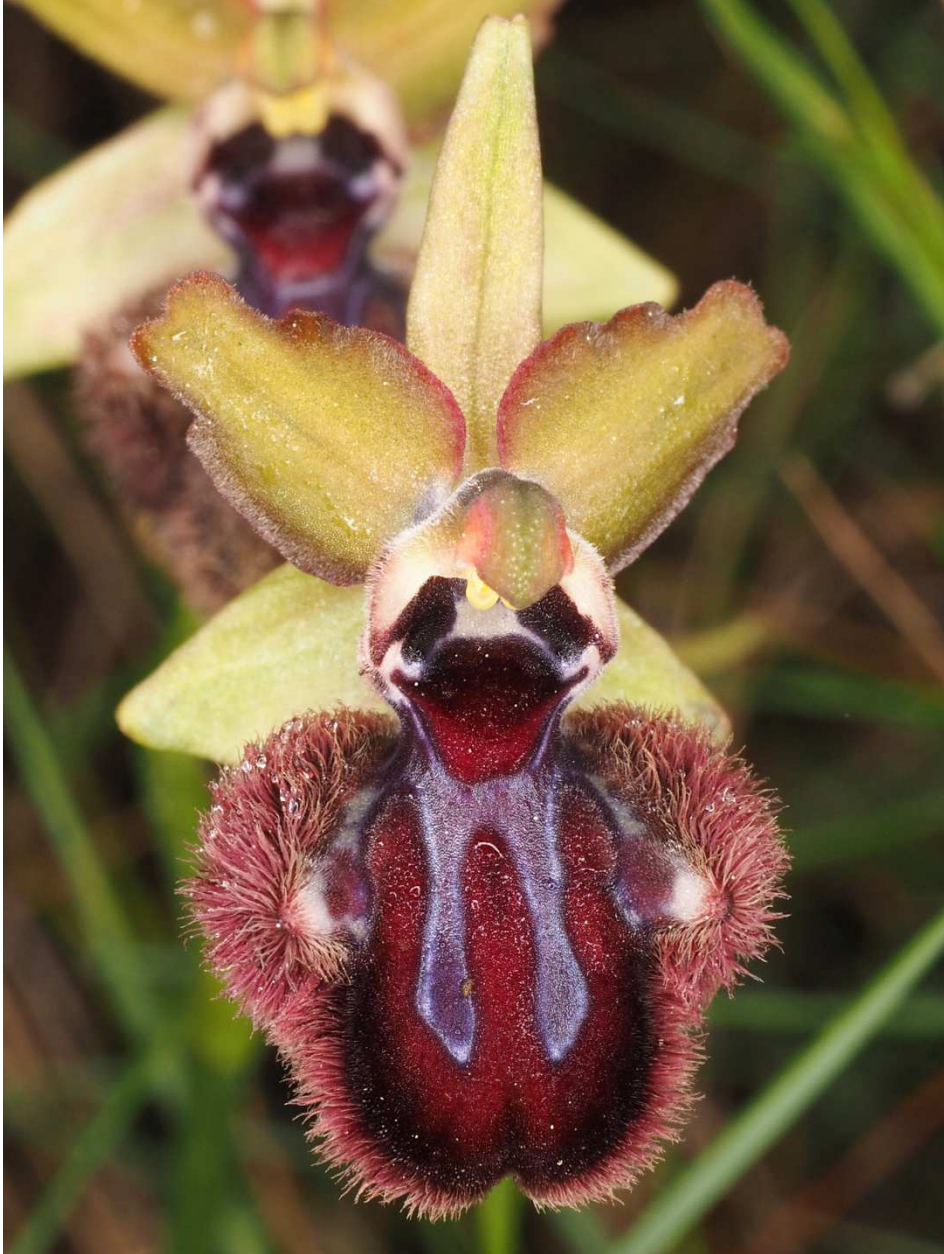
Ophrys bertolonii subsp. *benacensis* "aurelia"
x *Ophrys sphegodes* subsp. *provincialis*



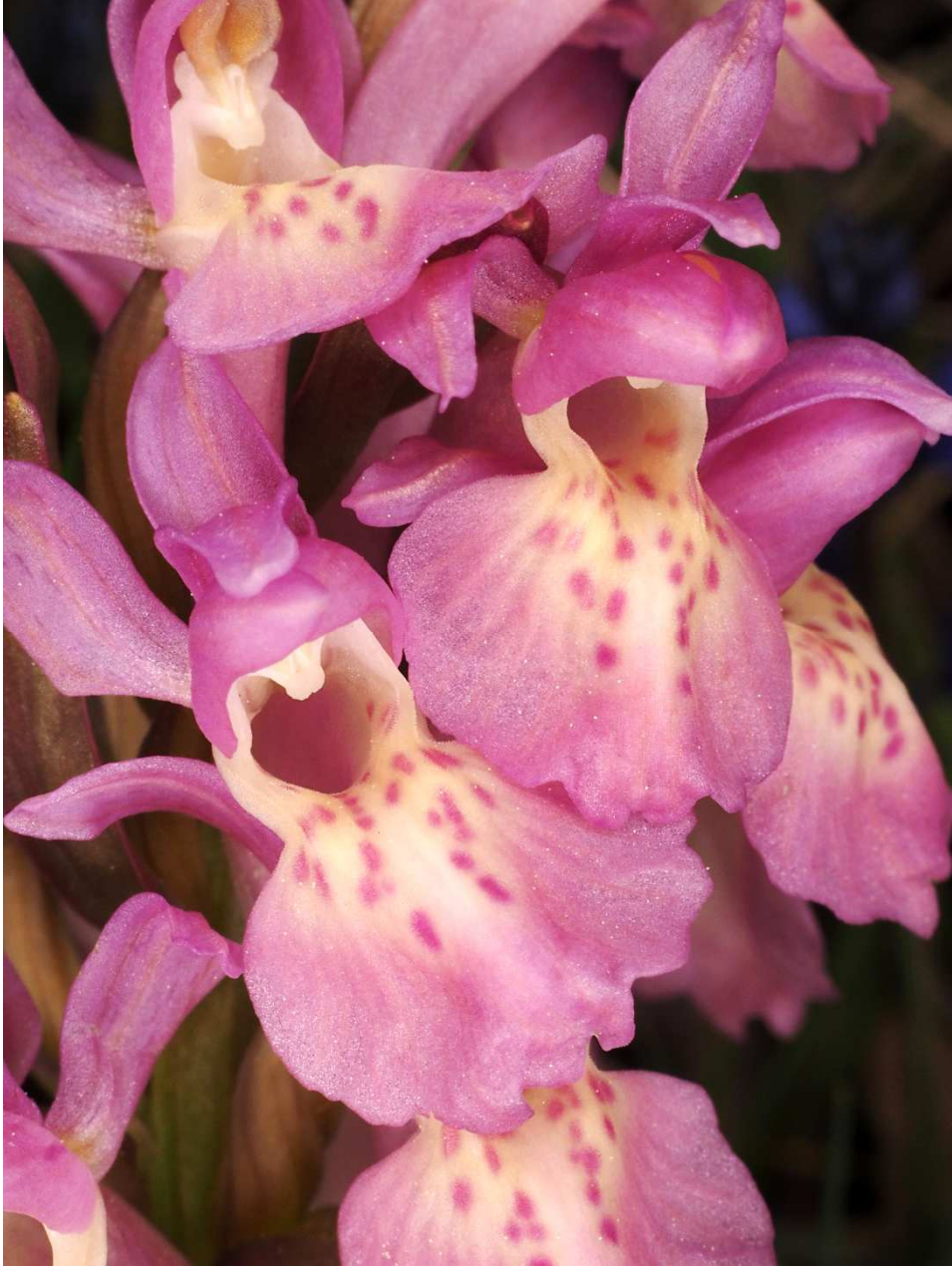
Ophrys bertolonii subsp. *benacensis* "aurelia"
x *Ophrys sphegodes* subsp. *provincialis*



Ophrys bertolonii subsp. *benacensis* "aurelia"
x *Ophrys sphegodes* subsp. *provincialis*



Ophrys incubacea subsp. *incubacea*



Dactylorhiza sambucina