

Fototafeln



Ophrys holoserica subsp. *holoserica* (P2)



Dactylorhiza incarnata s. *incarnata* x *Dactylorhiza maculata* s. *fuchsii* (P2)



Serapias vomeracea (P4)



Himantoglossum hircinum (P3)



Himantoglossum hircinum (P3)



Die beiden *Ophrys apifera*-Sippen am Standort P4



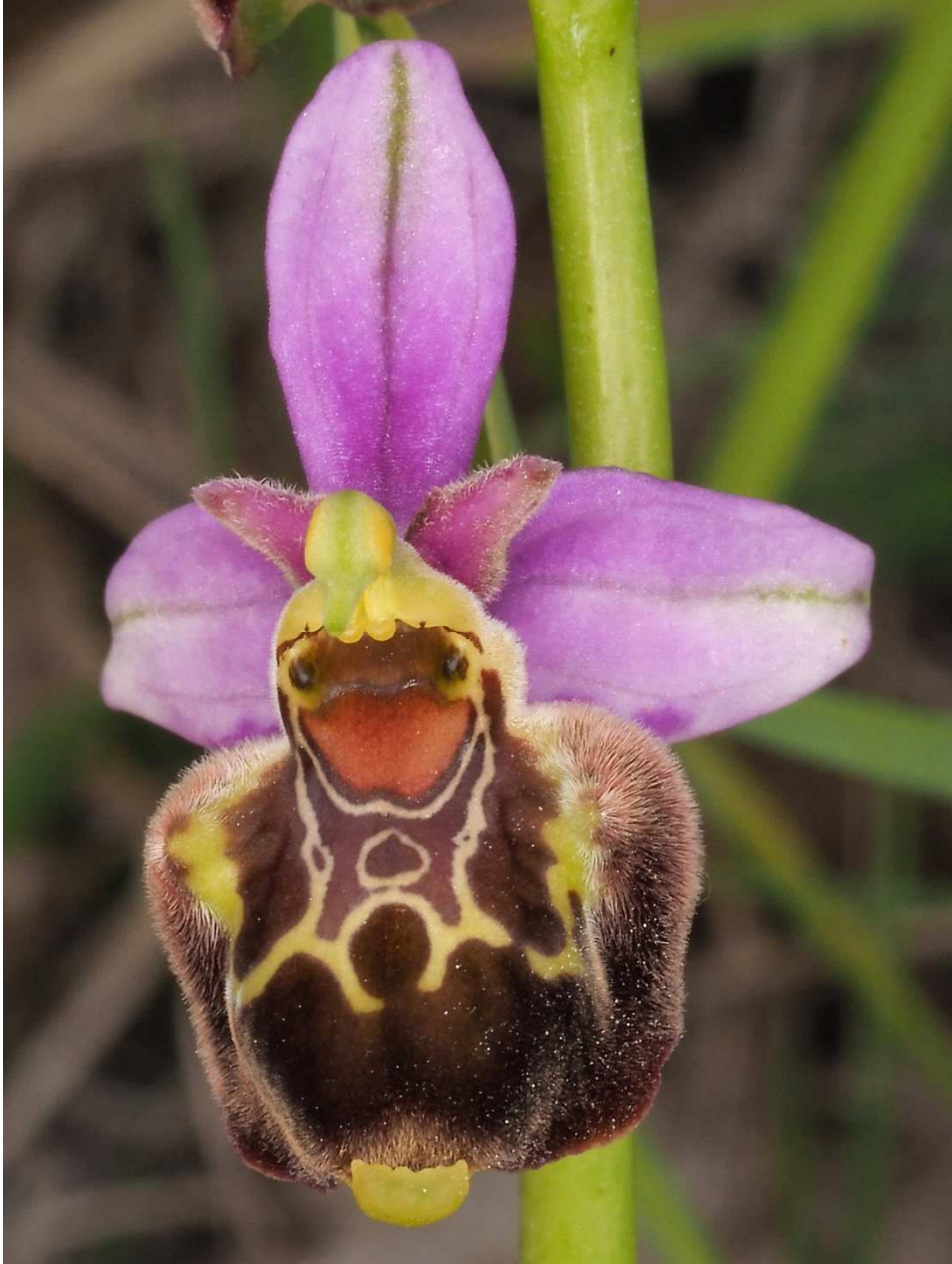
Ophrys scolopax subsp. *picta* (P7)



Ophrys scolopax subsp. *picta* (P7)



Ophrys holoserica subsp. *aegirtica* (P7)



Ophrys holoserica subsp. *aegirtica* (P7)



Ophrys holoserica subsp. *aegirtica* (P7)



Ophrys holoserica s. *aegirtica* (o), *Ophrys scolopax* s. *picta* (u), Hybride



Ophrys apifera (o), *Ophrys holoserica* subsp. *aegirtica* (u), Hybride



Ophrys apifera x *Ophrys holoserica* subsp. *aegritica* (P7)



Epipactis microphylla (P8)



Epipactis microphylla (P8)



Epipactis microphylla (o), *Epipactis parviflora* (u), Hybride (P8)



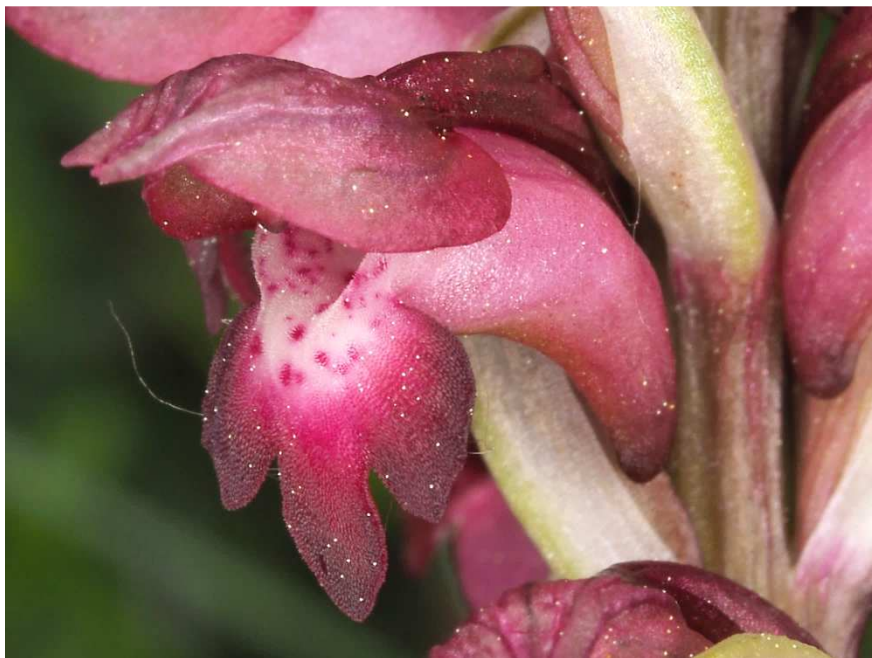
Farbvarianten von *Dactylorhiza sambucina* (P13)



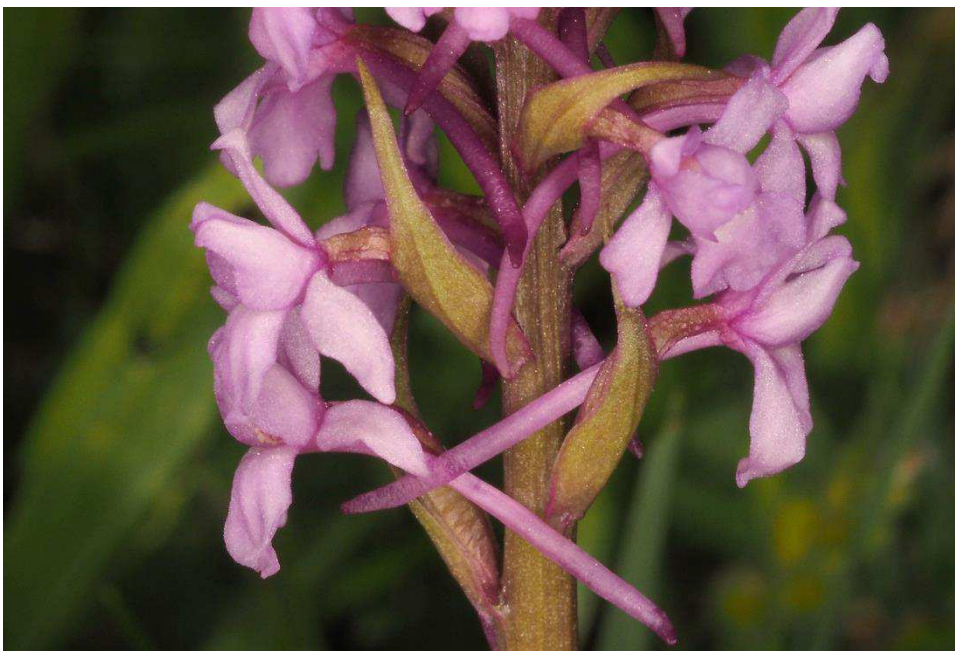
Orchis coriophora subsp. *martrinii* (P12)



Orchis coriophora subsp. *martrinii* (P12)



Orchis coriophora subsp. *martrinii* (P12)



Gymnadenia conopsea (P16)



Dactylorhiza maculata s. *savogiensis* x *Dactylorhiza majalis* s. *majalis* (P16)



Gymnadenia conopsea (Farbvariante)



Platanthera bifolia „palustris“ (P21)



Platanthera bifolia „palustris“ (P21)



Platanthera bifolia „palustris“ (P21)



Orchis mascula subsp. *mascula* (P22)



1-3: *Orchis mascula* subsp. *mascula*
4: *Orchis pallens* x *Orchis mascula* subsp. *mascula* ?



Waldhyazinthen-Bestand am Standort P 20



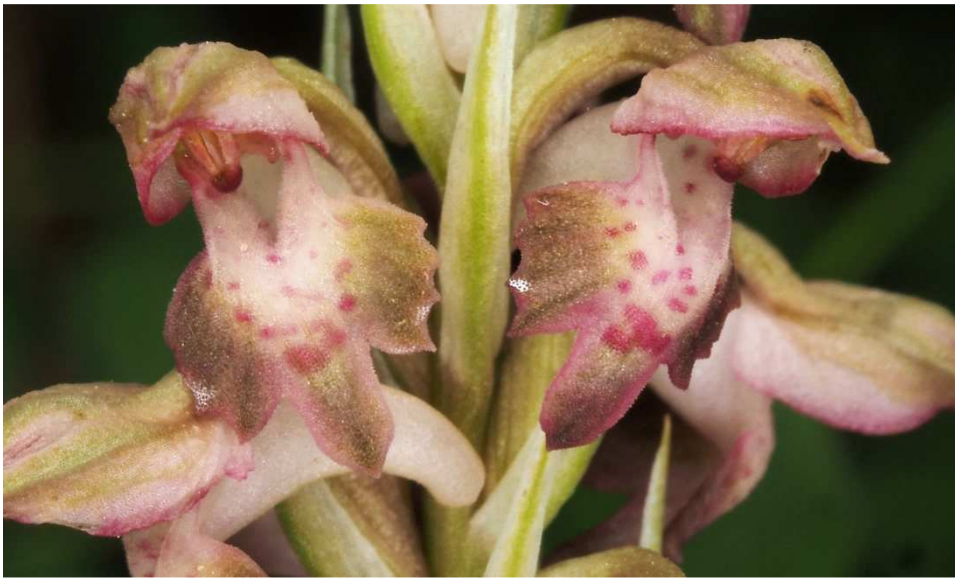
Waldhyazinthen-Bestand am Standort P 20



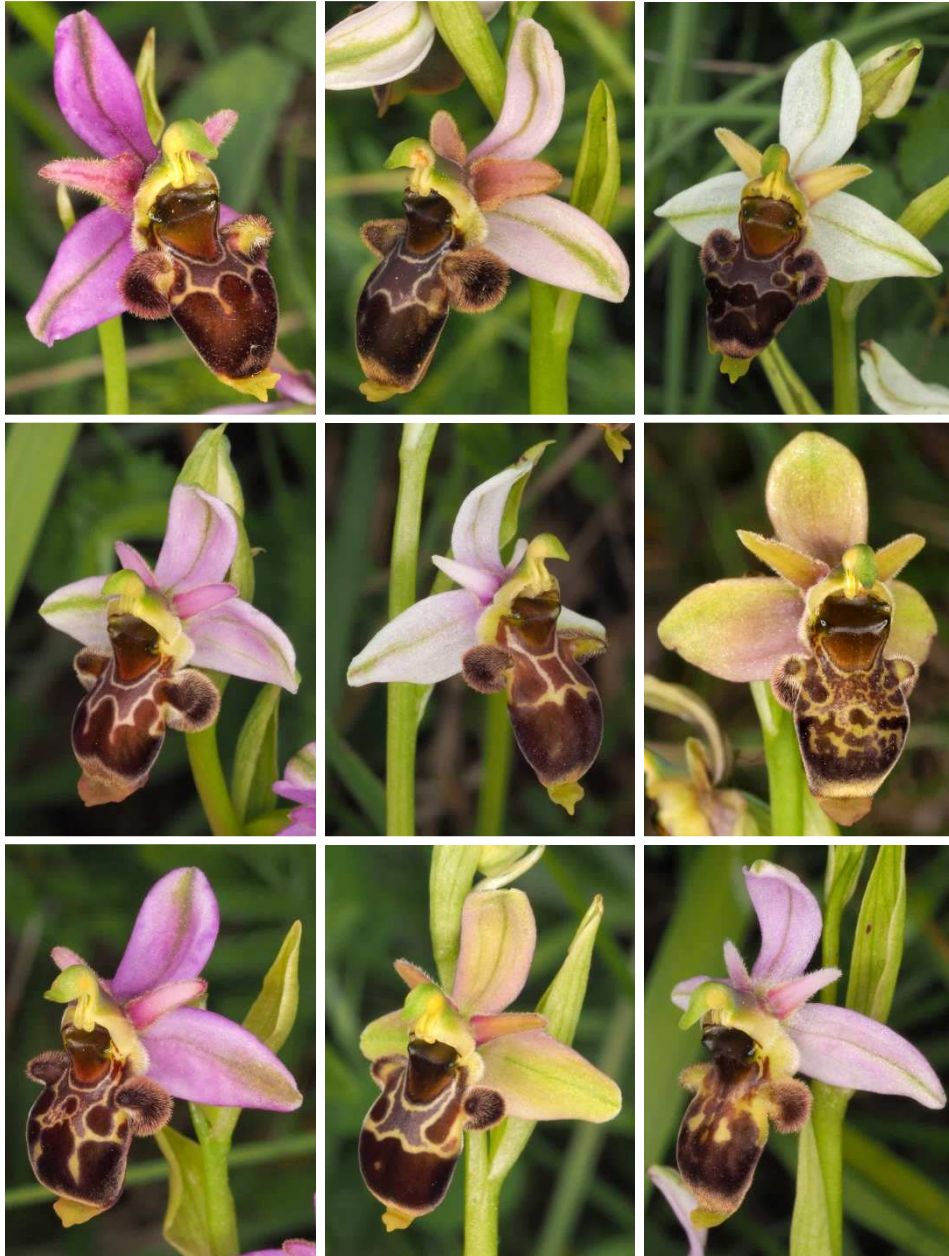
Waldhyazinthen-Bestand am Standort P 20



Dactylorhiza elata subsp. *sesquipedalis* (P22)



Orchis coriophora subsp. *coriophora* (P24)



Ophrys scolopax subsp. *scolopax* (P24)



Ophrys apifera x *Ophrys scolopax* subsp. *scolopax* (P24)



Orchis mascula subsp. *langei* (P25 und P38)



Orchis mascula subsp. *langei* (P25)



Dactylorhiza maculata subsp. *savogiensis* (Farbvariante)



Waldhyazinthen-Bestand am Standort P26



Waldhyazinthen-Bestand am Standort P26



Waldhyazinthen-Bestand am Standort P28



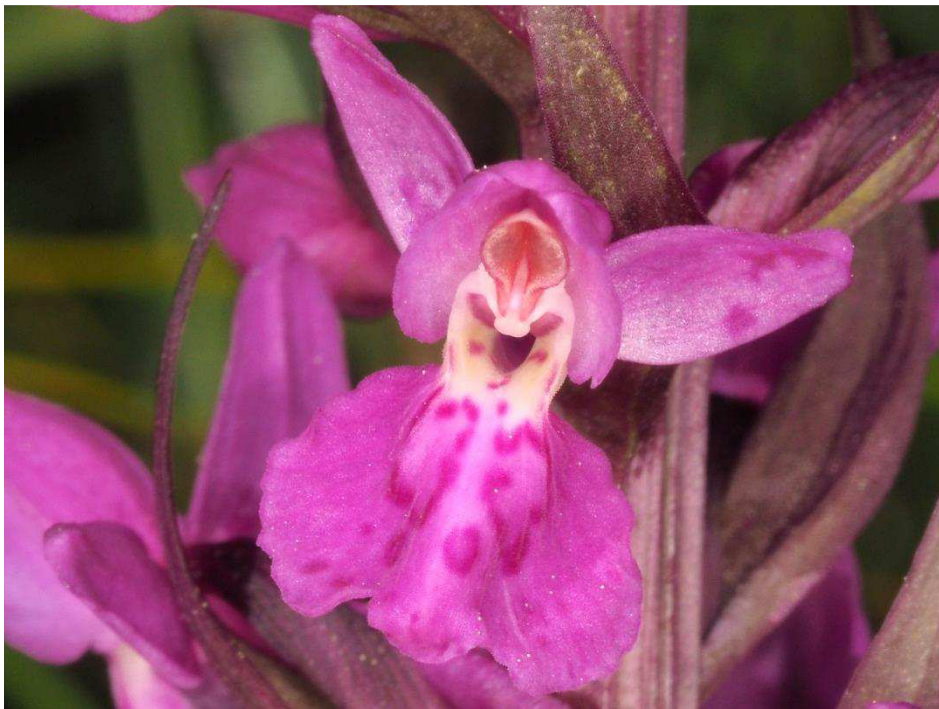
Waldhyazinthen-Bestand am Standort P28



Gymnadenia conopsea x *Dactylorhiza majalis* subsp. *majalis* (Pyrenäen 3)



Gymnadenia conopsea x *Dactylorhiza majalis* subsp. *majalis* (Pyrenäen 3)



Gymnadenia conopsea x *Dactylorhiza majalis* subsp. *majalis* (Pyrenäen 3)



Dactylorhiza majalis subsp. *majalis* (Pyrenäen 3, P31)



Dactylorhiza majalis subsp. *majalis* (Pyrenäen 3, P31)



Dactylorhiza majalis subsp. *majalis* (Pyrenäen 3, P31)



Orchis mascula subsp. *mascula* (P34)



Orchis mascula subsp. *mascula* (P34)



Platanthera-Bestand am Standort P36



Platanthera-Bestand am Standort P36



Dactylorhiza elata subsp. *sesquipedalis* (P37)



Dactylorhiza elata subsp. *sesquipedalis* (P37)



Dactylorhiza elata subsp. *sesquipedalis* (P37)



Ophrys scolopax subsp. *scolopax* (P38)



Ophrys scolopax subsp. *scolopax* (P38)



Ophrys scolopax subsp. *scolopax* (mit *Eucera elongatula*? P38)



Neottia nidus-avis (Farbvariante)



Dactylorhiza elata subsp. *sesquipedalis*
x *Dactylorhiza maculata* subsp. *fuchsii* (P40)



Dactylorhiza elata subsp. *sesquipedalis*
x *Dactylorhiza maculata* subsp. *fuchsii* (P40)



Epipactis cf. *helleborine* „Sonnenform“ (P42)



Epipactis cf. *helleborine* „Sonnenform“ (P42)



Epipactis parviflora (P1)



Epipactis parviflora (P1)