



Ophrys holoserica subsp. *dinarica* x *Ophrys sphegodes* subsp. *sphegodes*



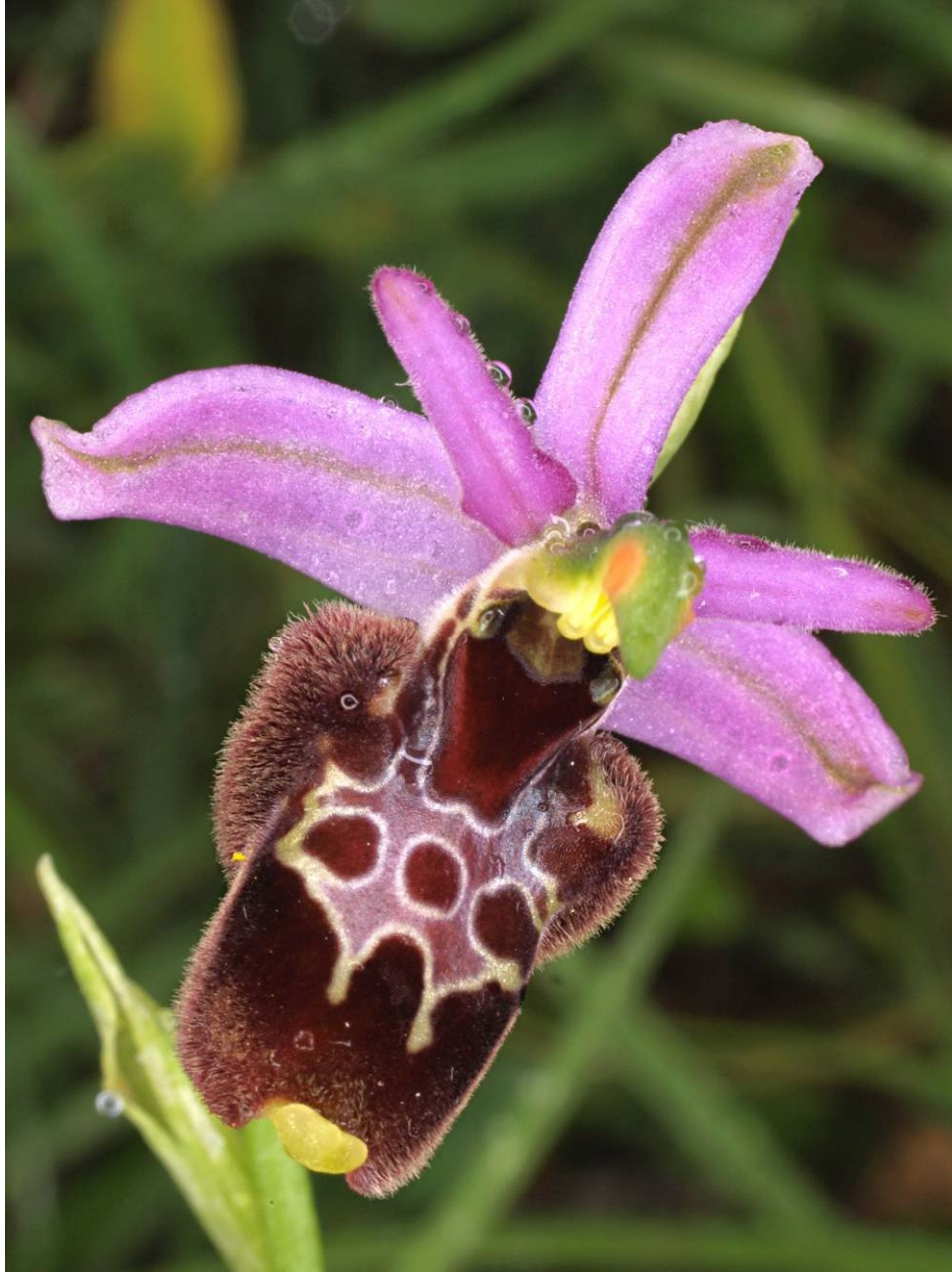
Dactylorhiza maculata subsp. *saccata*, *Dactylorhiza incarnata* subsp. *incarnata*
und Hybride (m)



Orchis spitzelii



Ophrys holoserica subsp. *dinarica*



Ophrys holoserica subsp. *dinarica* x *Ophrys bertolonii* subsp. *bertolonii*