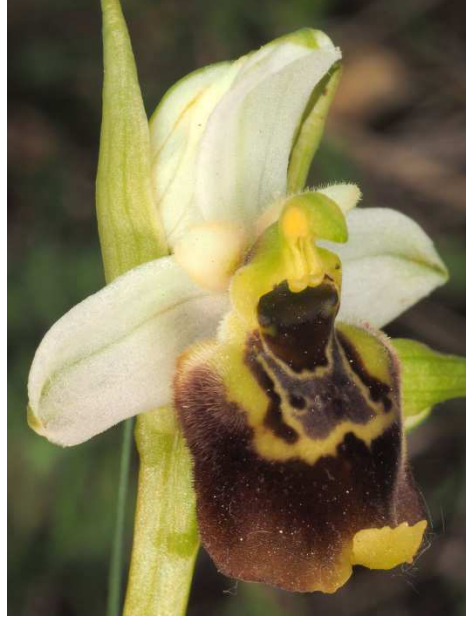
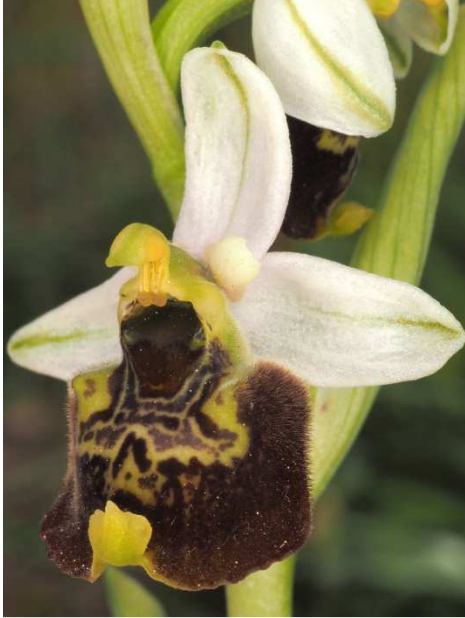


Non parlare italiano, bloß Spaghetti

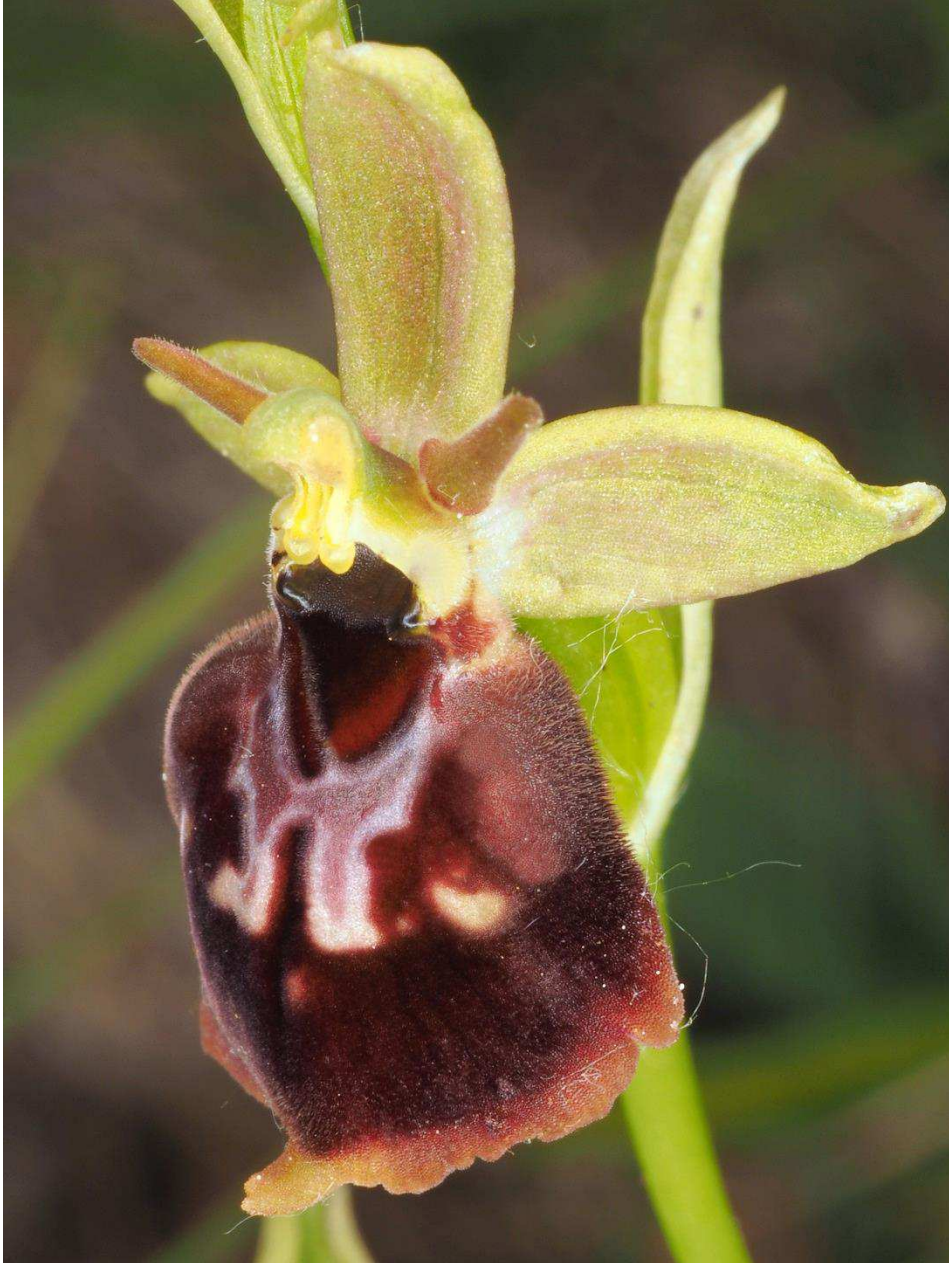
Auf Orchideensuche quer durch den Stiefel

15. - 25. Mai 2014

FARBTAFLN



Ophrys holoserica subsp. *brachyotes*



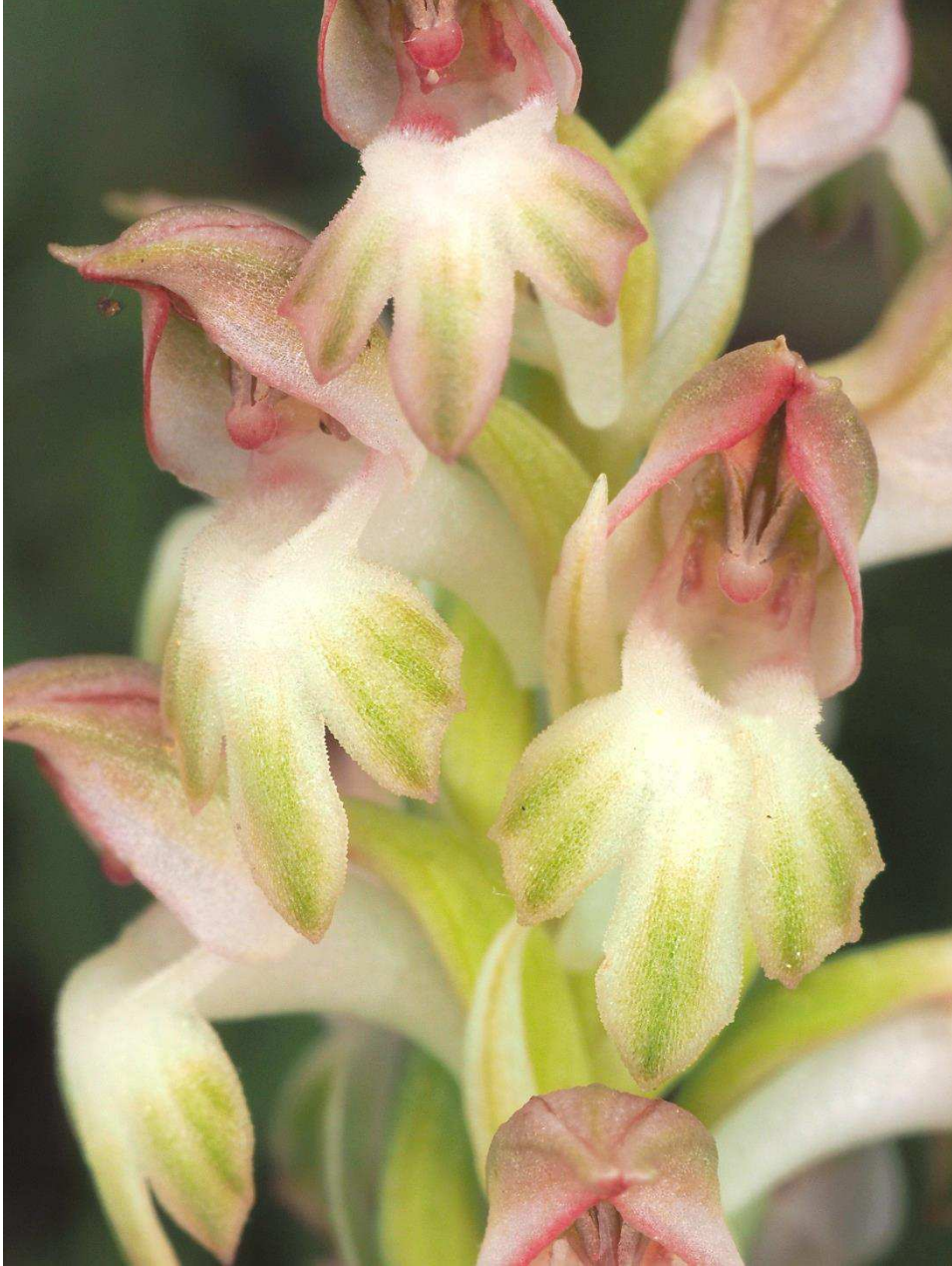
Ophrys insectifera subsp. *insectifera* x *Ophrys holoserica* subsp. *brachyotes*



Ophrys holoserica subsp. *lorenae*



Anacamptis pyramidalis x *Orchis palustris* subsp. *laxiflora*



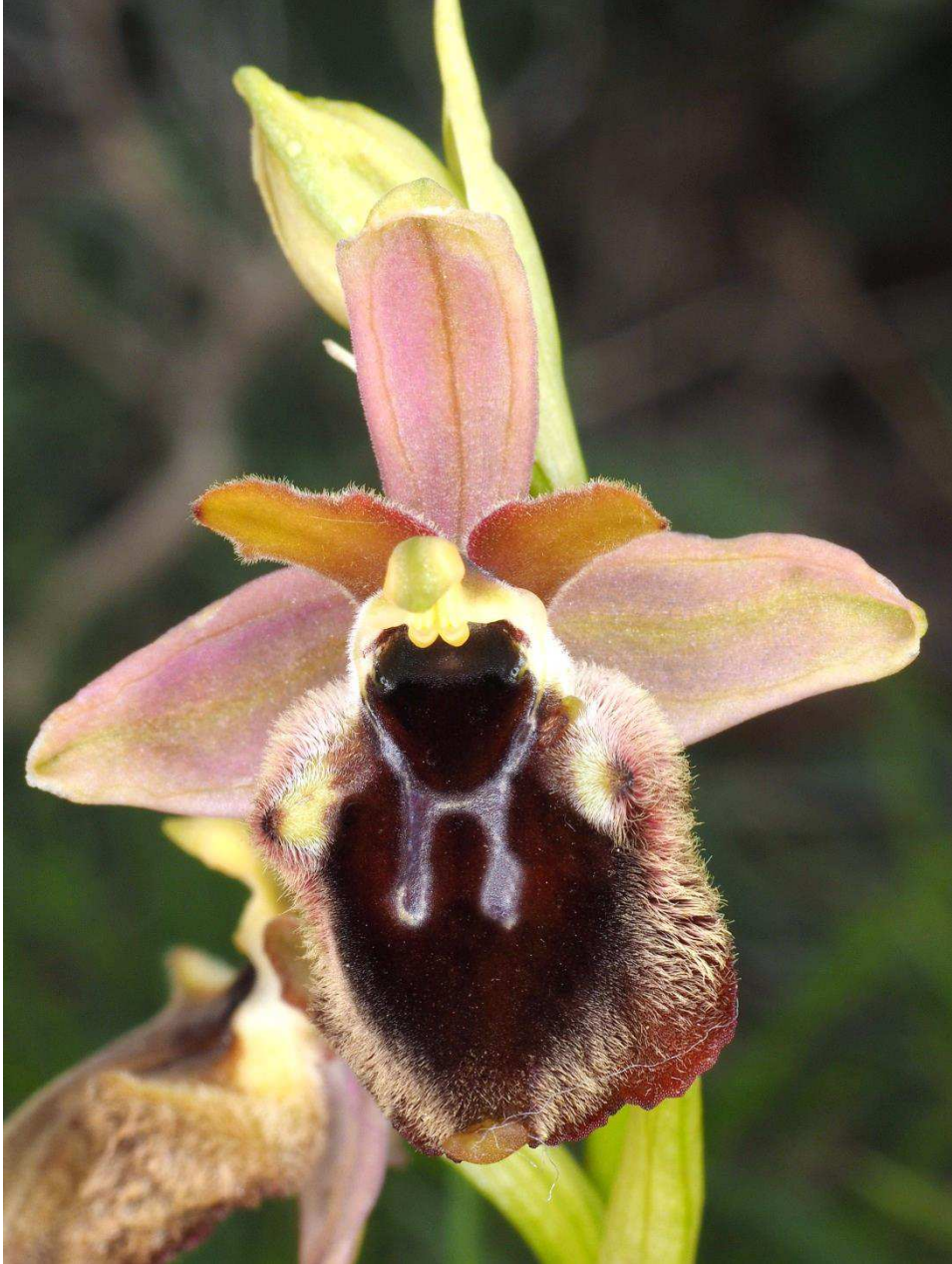
Orchis coriophora subsp. *fragrans*



Ophrys fusca subsp. *fusca* "lucana"



Ophrys holoserica subsp. *holoserica* x *Ophrys promontorii*



Ophrys holoserica subsp. *holoserica* x *Ophrys promontorii*



Orchis morio subsp. *morio*



Orchis morio subsp. *morio* x *Orchis papilionacea* subsp. *papilionacea*



Ophrys bertolonii subsp. *bertolonii* lusus *flavescens*



Aceras anthropophorum x *Orchis italica*



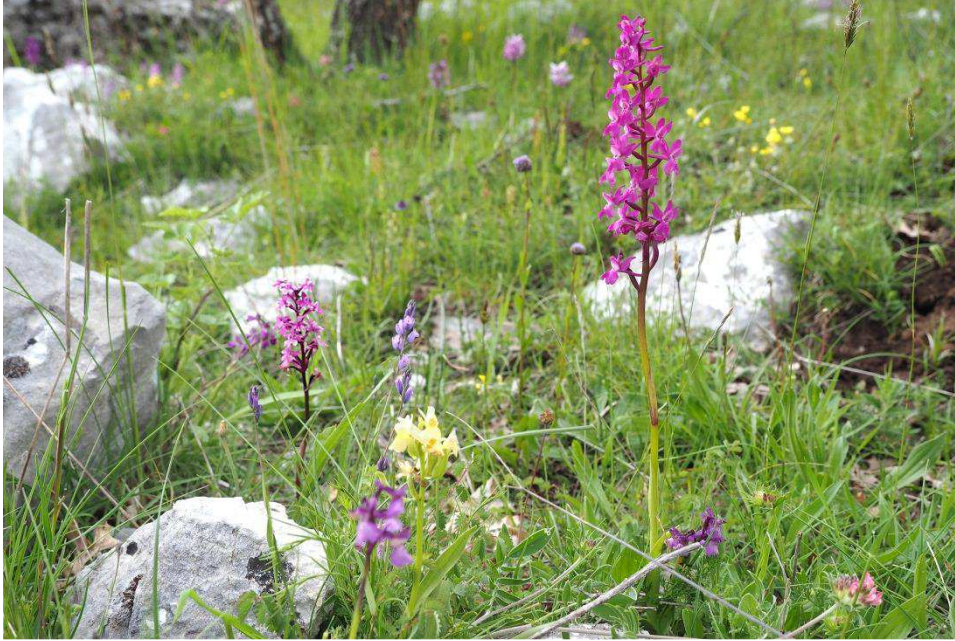
Ophrys sphegodes subsp. *ausonia*



Orchis morio subsp. *morio* x *Orchis palustris* subsp. *laxiflora*



Aceras anthoporum, *Orchis simia* subsp. *simia* und Hybride



Orchis quadripunctata s. quadrip. und Hybride mit *Orchis mascula* s. mascula



Orchis quadripunctata subsp. *quadripunctata* x *orchis pauciflora*



Orchis quadripunctata subsp. *quadripunctata* x *Orchis mascula* subsp. *mascula*



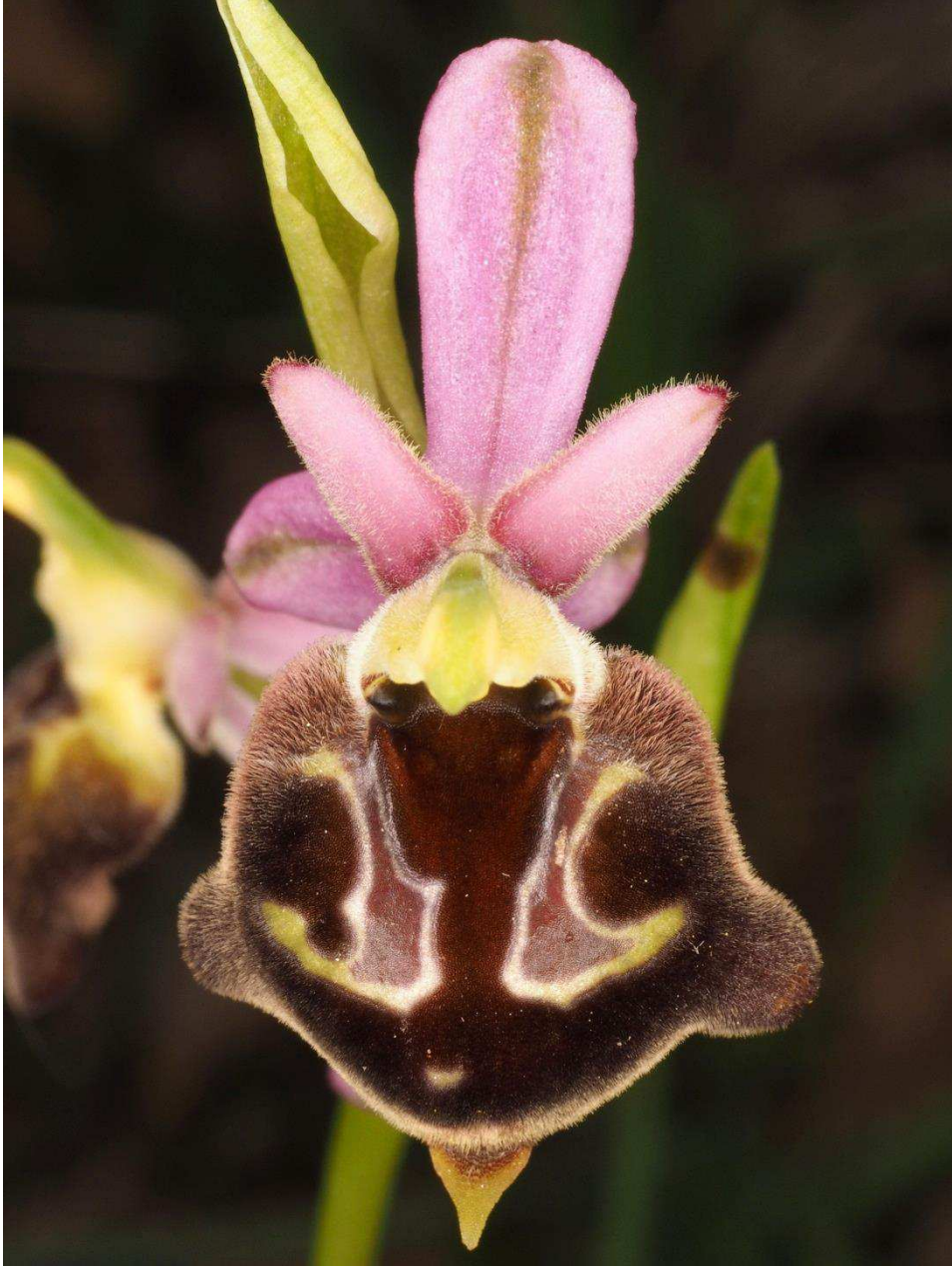
Aceras anthropophorum x *Orchis simia* subsp. *simia*



Orchis ustulata subsp. *ustulata* x *Orchis tridentata* subsp. *tridentata*



Orchis simia subsp. *simia* (Farbvariante)



Ophrys crabronifera subsp. *biscutella*



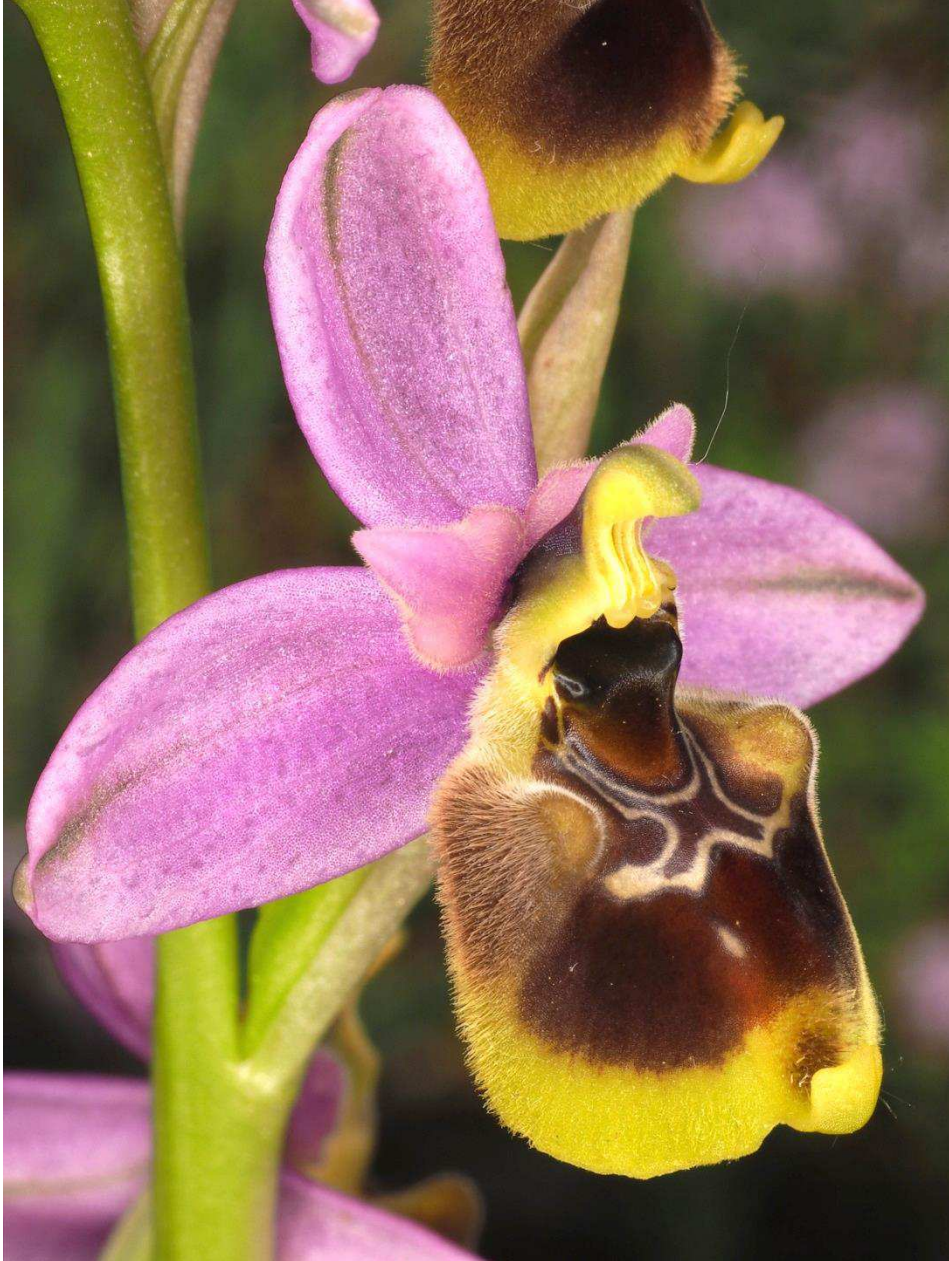
Ophrys sphegodes subsp. *pseudoatrata*



Ophrys lacaitae x *Ophrys holoserica* subsp. *gracilis*



Ophrys lacaitae x *Ophrys holoserica* subsp. *gracilis*



Ophrys tenthredinifera subsp. *neglecta* x *Ophrys holoserica* subsp. *gracilis*



Ophrys tenthredinifera subsp. *neglecta* x *Ophrys holoserica* subsp. *gracilis*



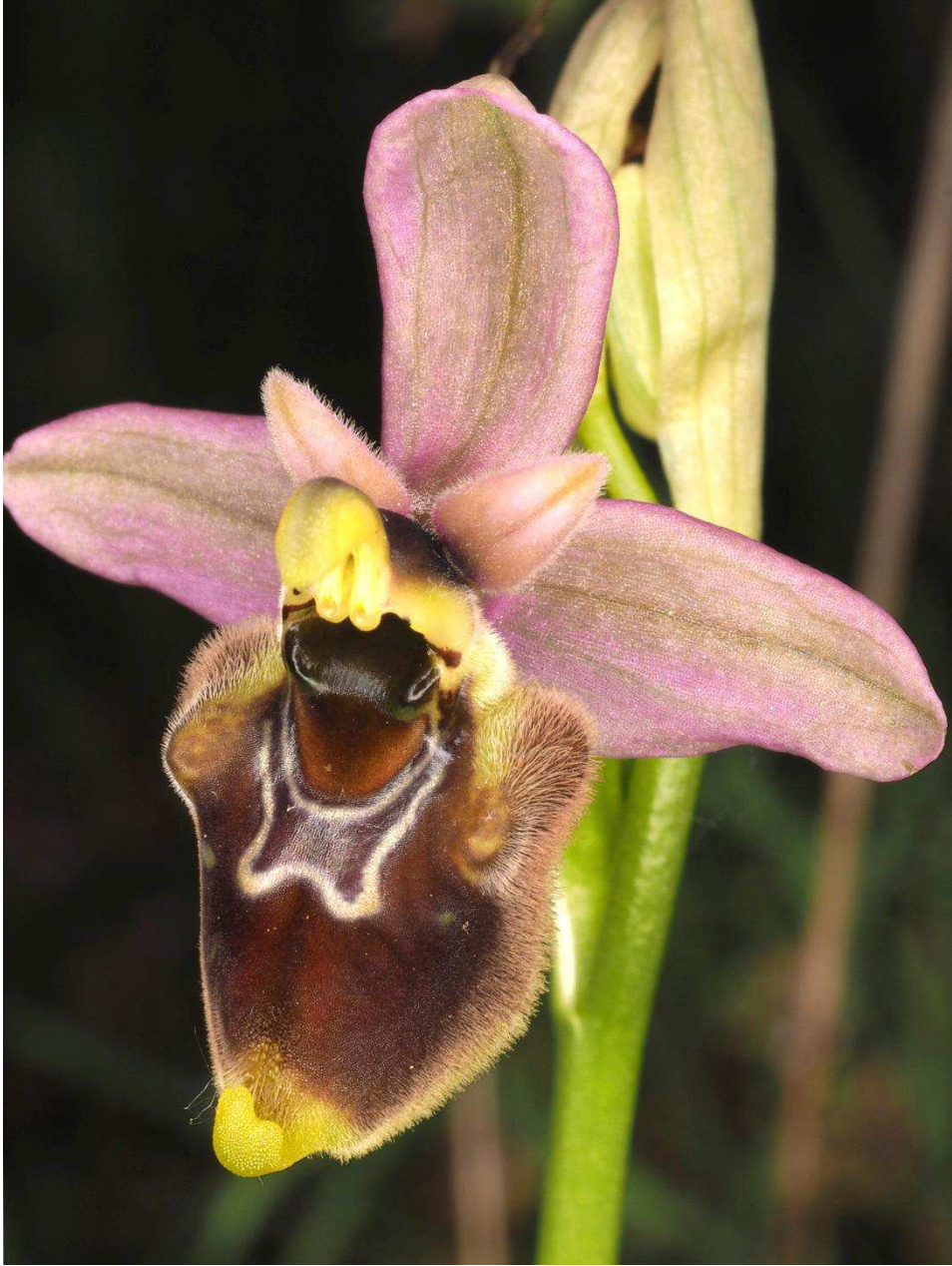
Ophrys holoserica subsp. *tetraloniae*?



Ophrys holoserica subsp. *tetraloniae*?



Hybride mit *Ophrys tenthredinifera* subsp. *neglecta*



Ophrys holoserica subsp. *tetraloniae*? x *Ophrys tenthredinifera* subsp. *neglecta*



Ophrys tenthradinifera subsp. *neglecta* (o.l.) und *Ophrys sphegodes* subsp. *pseudoatrata* (u.r.) und Hybriden (2x)



Ophrys holoserica subsp. *gracilis* (Farbvariante)



Ophrys scolopax subsp. *conradiae*



Ophrys holoserica subsp. *apulica*



Ophrys holoserica subsp. *cinnabarina*



Ophrys holoserica subsp. *paolina*



Ophrys holoserica subsp. *pinguis*



Orchis pauciflora x *Orchis mascula* subsp. *mascula*



Dactylorhiza sambucina



Orchis mascula subsp. *mascula* x *Orchis spitzelii* subsp. *spitzelii*



Orchis spitzelii subsp. *spitzelii* x *Orchis pallens*



Ophrys holoserica subsp. *appennina* (o.l.) ? und Hybriden mit *Ophrys lacaitae*



O. holoserica subsp. *dinarica*
x *Ophrys promontorii*



O. holoserica subsp. *dinarica*
x *O. sphegodes* subsp. *sphegodes*



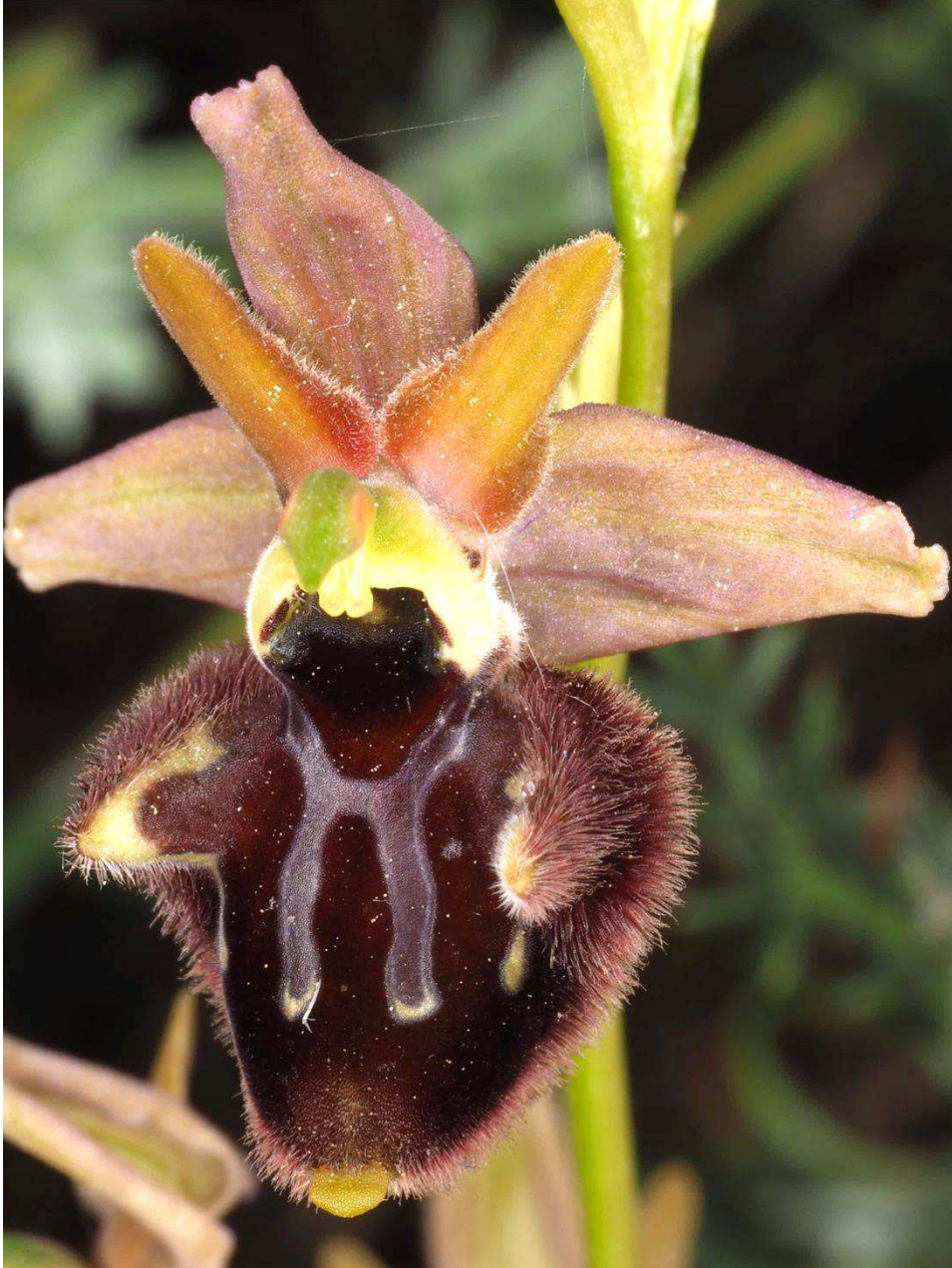
O. holoserica subsp. *punguis*
x *O. holoserica* subsp. *dinarica*



O. bertolonii subsp. *bertolonii*
x *O. sphegodes* subsp. *sphegodes*



Ophrys bertolonii subsp. *bertolonii* x *Ophrys promontorii*



Ophrys incubacea subsp. *incubacea* x *Ophrys holoserica* subsp. *gracilis*



Ophrys apifera subsp. *apifera lusus flavescens*



Himantoglossum adriaticum



Himantoglossum adriaticum



Ophrys holoserica subsp. *dinarica* (Farbvariante)



Ophrys sphegodes subsp. *Riojana* beim Campo Imperatore



Ophrys sphegodes subsp. *Riojana* beim Campo Imperatore



Orchis purpurea subsp. *purpurea* x *Orchis militaris* subsp. *militaris*



Orchis purpurea subsp. *purpurea* x *Orchis militaris* subsp. *militaris*
(labelloide Petalen / "Hirschgeweih")